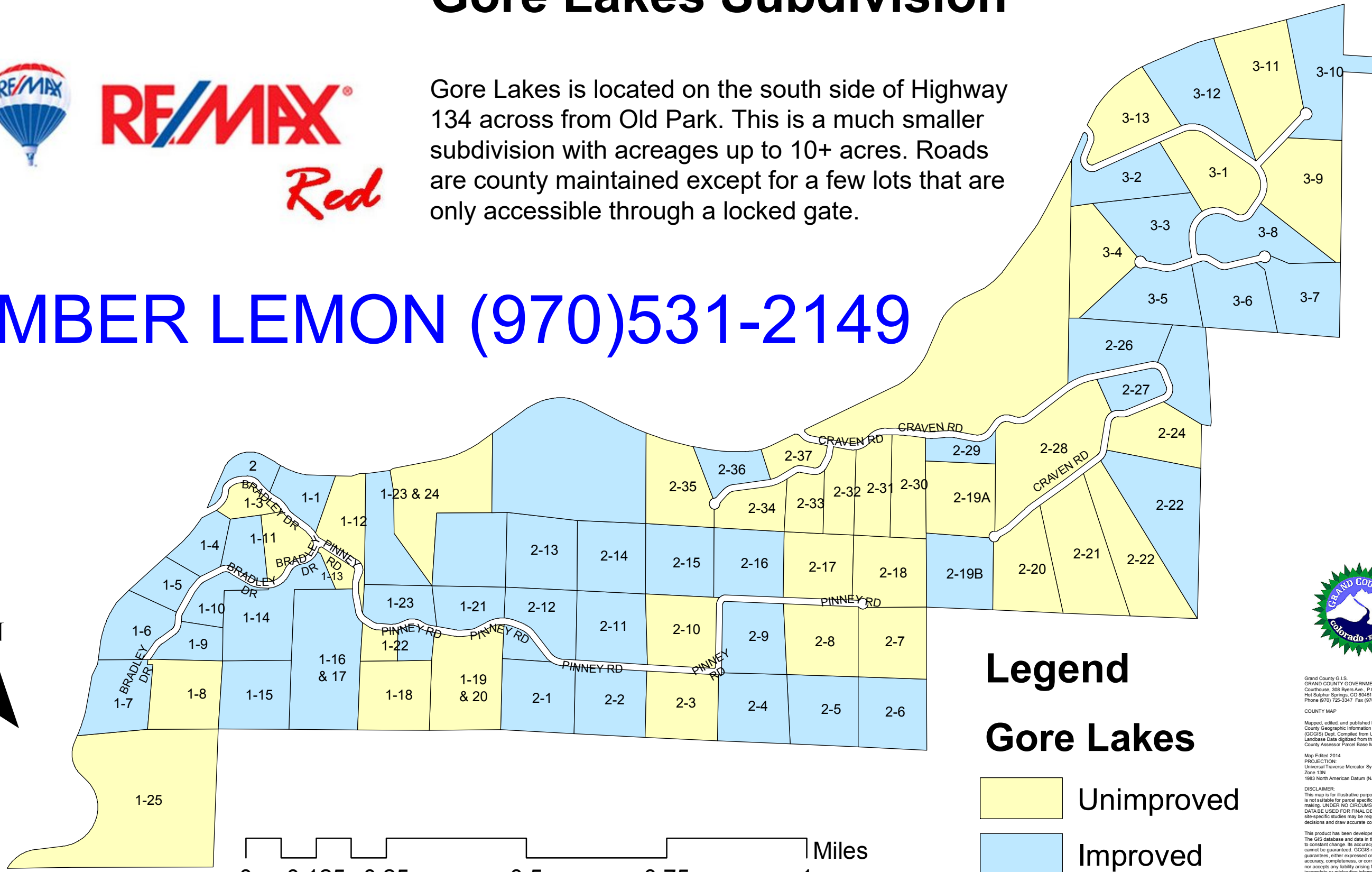


Gore Lakes Subdivision



Gore Lakes is located on the south side of Highway 134 across from Old Park. This is a much smaller subdivision with acreages up to 10+ acres. Roads are county maintained except for a few lots that are only accessible through a locked gate.

AMBER LEMON (970)531-2149



Grand County G.I.S.
 GRAND COUNTY GOVERNMENT
 Courthouse, 308 Byers Ave., P.O. Box #264
 Hot Sulphur Springs, CO 80451
 Phone (970) 725-3347 Fax (970) 725-3303

COUNTY MAP
 Mapped, edited, and published by the Grand
 County Geographic Information System
 (GCGIS) Dept. Compiled from U.S. West
 Landbase Data digitized from the Grand
 County Assessor Parcel Base Map (1997).

Map Edited 2014
 PROJECTION:
 Universal Traverse Mercator System
 Zone 13N
 1983 North American Datum (NAD83) Units of Meters

DISCLAIMER:
 This map is for illustrative purposes only, and
 is not suitable for parcel specific decision
 making. UNDER NO CIRCUMSTANCES SHALL GCGIS
 DATA BE USED FOR FINAL DESIGN PURPOSES. More
 site-specific studies may be required to make
 decisions and draw accurate conclusions.

This product has been developed for County use only.
 The GIS database and data in the products are subject
 to constant change. Its accuracy and completeness
 cannot be guaranteed. GCGIS makes no warranties or
 guarantees, either expressed or implied, as to the
 accuracy, completeness, or correctness of such products
 nor accepts any liability arising from any incorrect,
 incomplete or misleading information contained therein.

©Copyright 1998 by the County of Grand, Colorado, U.S.A.
 The information contained herein is for personal use
 only. Any redistribution of this information is
 strictly prohibited without permission by the County of
 Grand, Colorado.