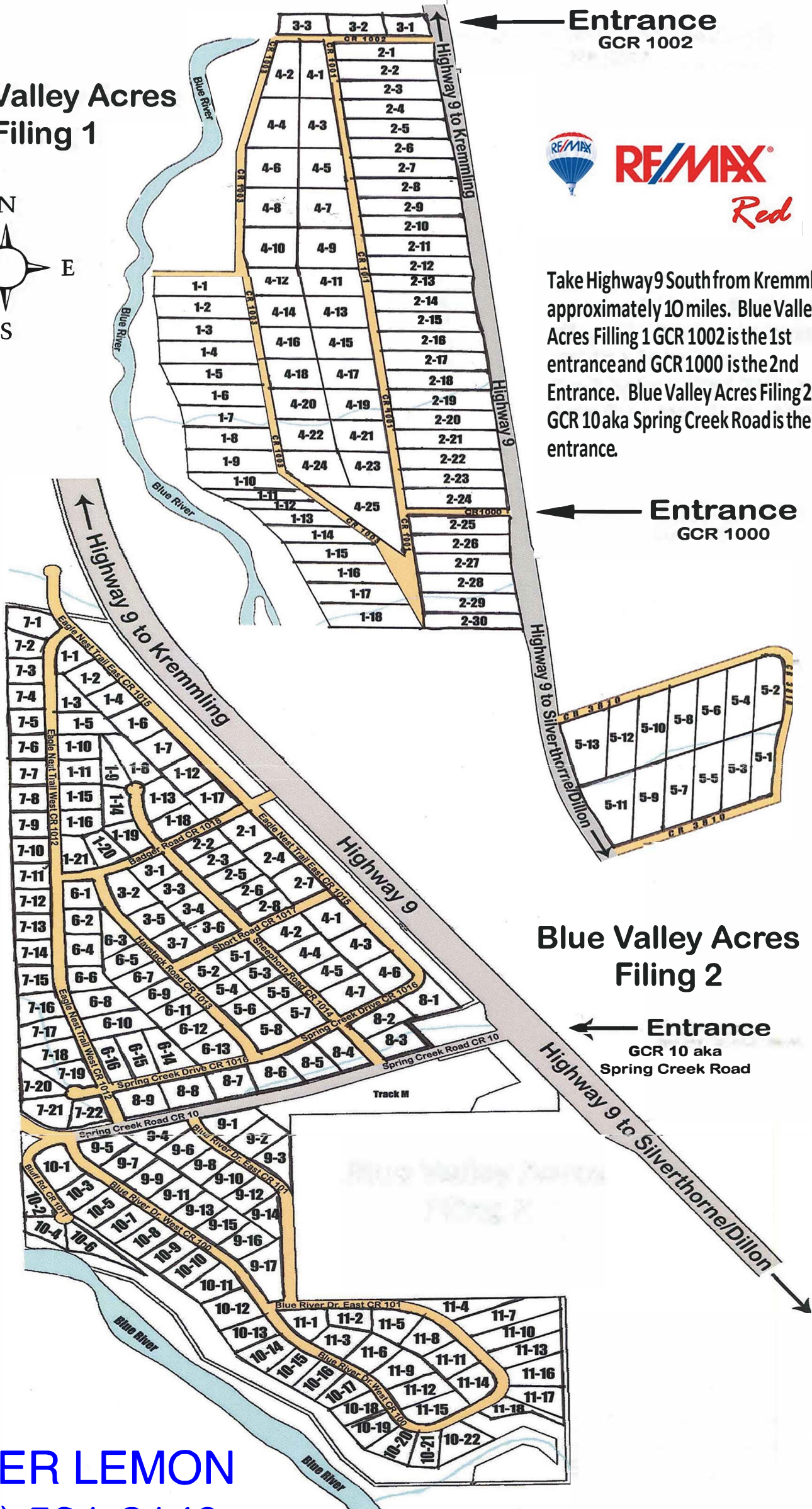
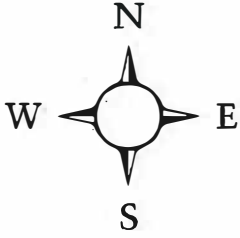


Blue Valley Acres Filing 1



Entrance
GCR 1002



RE/MAX
Red

Take Highway 9 South from Kremmling approximately 10 miles. Blue Valley Acres Filing 1 GCR 1002 is the 1st entrance and GCR 1000 is the 2nd Entrance. Blue Valley Acres Filing 2 GCR 10 aka Spring Creek Road is the 3rd entrance.

Entrance
GCR 1000

Blue Valley Acres Filing 2

Entrance
GCR 10 aka
Spring Creek Road

AMBER LEMON
(970) 531-2149